

Printer Driver Help Contents

The following topics describe ways to customize your documents and use the printer driver efficiently.

Dialogs

- [Paper](#)
 - [Advanced Paper](#)
 - [User Forms](#)
- [Finisher](#)
- [Graphics](#)
- [Color](#)
 - [Advanced Color](#)
- [Features](#)
- [PostScript](#)
 - [Download Header](#)
- [Fonts](#)
- [Overlay](#)

Printer Features

- [Features List](#)
- [Color Features List](#)
- [Finishing Features](#)

Procedures

- All Colors to Black
 - [About all colors to black](#)
 - [Setting](#)
- Automatic Tray Linking
 - [About automatic tray linking](#)
 - [Enabling](#)
- Compressing Data
 - [About compressing data](#)
 - [Specifying](#)
- Copies
 - [About copies](#)
 - [Specifying number](#)
- Encapsulated PostScript Files
 - [About Encapsulated PostScript \(EPS\) files](#)
 - [Creating](#)
- Duplex Printing
 - [About duplexing](#)
 - [Printing on both sides of the paper](#)
- Fast Printing
 - [About fast printing direct to port](#)
 - [Enabling](#)
- Fill Pattern Resolution
 - [About Fill Pattern Resolution](#)
 - [Changing](#)
- Fonts
 - [About fonts](#)
 - [Downloading and storing in the printer](#)
 - [Sending when printing each page](#)
 - [Specifying format for sending TrueType fonts to your printer](#)
 - [Using closest matching printer fonts](#)
 - [Using the Font Substitution Table](#)

Forms

- [About forms](#)
- [Choosing size](#)
- [Choosing source](#)
- [Choosing type](#)
- [Creating custom size](#)
- [Specifying printer action when the selected form is not available](#)

Halftone Options

- [About halftoning](#)
- [Selecting](#)

Header Information

- [About header information](#)
- [Sending header information each time you print](#)
- [Sending header information to a computer file](#)
- [Sending header information to printer memory \(RAM\)](#)
- [Storing header information in flash or disk](#)

Image Enhancement

- [About Image Enhancement](#)
- [Specifying Image Enhancement](#)

Multipage Printing

- [About multipage printing](#)
- [Printing multiple page images on one form](#)

Negative Images

- [About printing negative images](#)
- [Printing](#)

Negative Pages

- [About printing negative pages](#)
- [Printing](#)

Options

- [About options](#)
- [Automatically updating the list of installed options](#)
- [Manually updating the list of installed options](#)
- [Updating the list of installed options](#)

Overlays

- [About Overlays](#)
- [Creating](#)
- [Creating and storing in your printer](#)
- [Creating on your system and storing it in the printer](#)
- [Downloading an existing overlay file](#)
- [Using](#)

Paper

- [About paper](#)
- [Choosing size](#)
- [Choosing source](#)
- [Choosing type](#)
- [Creating custom size](#)
- [Specifying printer action when the selected paper is not available](#)

PostScript Error Information

- [About printing PostScript error information](#)
- [Printing](#)

Print Orientation

- [About print orientation](#)
- [Specifying](#)

Print Quality

- [About print quality](#)

Changing the fill pattern resolution

Smoothing

Specifying printing resolution

Printing

About printing

Duplex (both sides of the paper)

Mirror images of your document

Multiple page images on one sheet

Negative pages of your document

Negative images in your document

PostScript error information

Scaling

About scaling

Reducing or enlarging documents

Smoothing

About smoothing

Using

Virtual Printer Memory

About virtual memory

Specifying

Troubleshooting

4-up pages don't print as expected

Bidirectional update failed

Update features unavailable

Busy light comes on, but documents don't print

Documents don't finish printing

Documents don't print with overlays

Documents print slowly

Documents print with black and white type reversed

Documents print with unexpected characters or graphics

Files copied to the printer don't print

Fonts don't print as expected

Gray shades print as black

List of installed options doesn't update

No download destinations are available

Copyright © 1994-1996 by Lexmark International, Inc.

V3.80

PostScript is a trademark of Adobe Systems Incorporated registered in the United States.

Paper

For more information about individual selections in this dialog box, choose that option on the dialog image below.

(Note: you can also use the tab key to advance through selectable areas in the image below.)

The image shows a Windows-style dialog box titled "Printer - LPT1:". The "Paper" tab is selected, and the "Form Type" is set to "Letter 8 1/2 x 11 in". The "Form Source" is "Auto Select" and "Output to:" is "Printer". The "Orientation" section has "Portrait" selected. The "Duplex" section has "None" selected. The "Multipage Printing" section has "1 Up" selected and "Border" checked. The "Page Layout" section has "Across" selected. The "Copies" is set to 1 and "Scaling" is 100%. There are buttons for "User Forms...", "Advanced...", "Defaults", "OK", "Cancel", "Apply", and "Help".

PostScript	Fonts	Overlays	About
Paper	Finishing	Graphics	Features

Form Type: Letter 8 1/2 x 11 in

Form Source: Auto Select

Output to: Printer

File Name:

Orientation

Portrait Landscape

Mirror Rotate 180°

Multipage Printing

1 Up

Border

Page Layout

Across Down

Duplex

None Long Edge Short Edge

Copies: 1

Scaling: 100

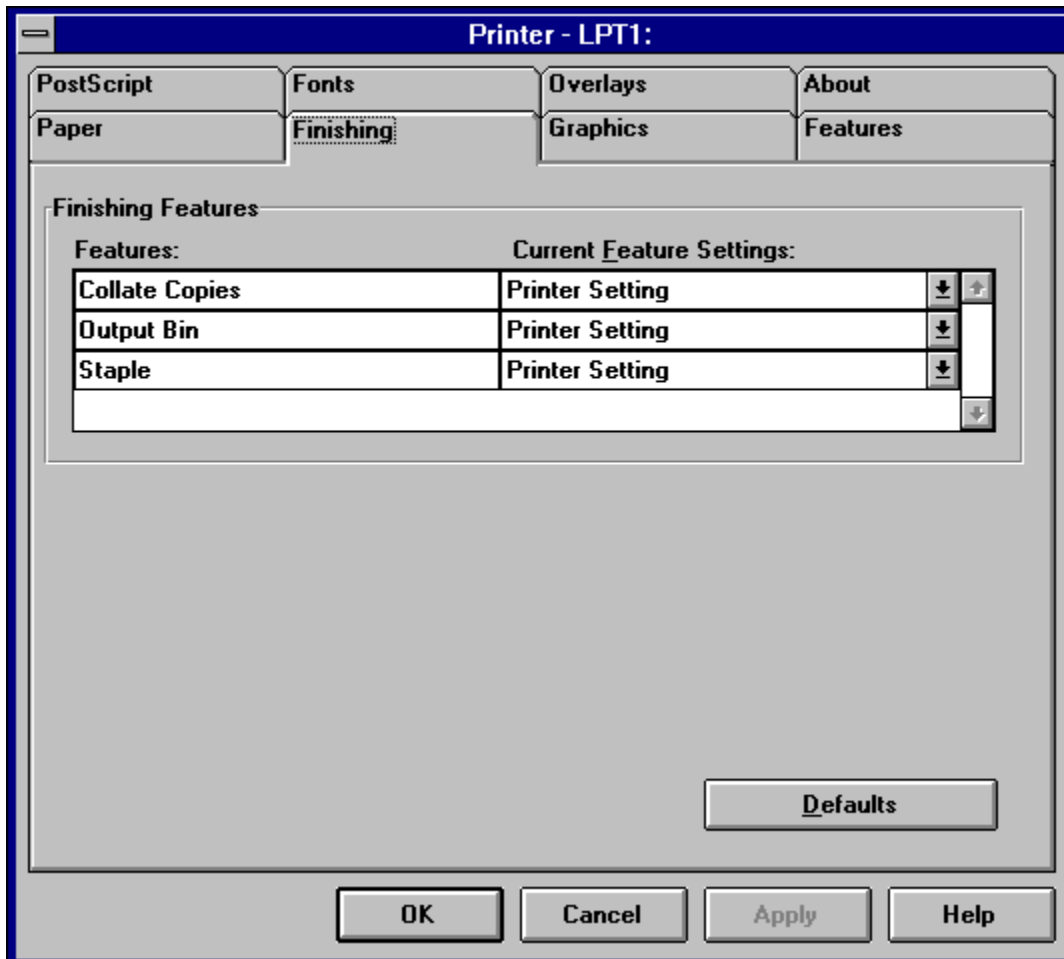
User Forms... Advanced... Defaults

OK Cancel Apply Help

Finisher

For more information about individual selections in this dialog box, choose that option on the dialog image below. This dialog will not be present for your printer if there are no Finisher options.

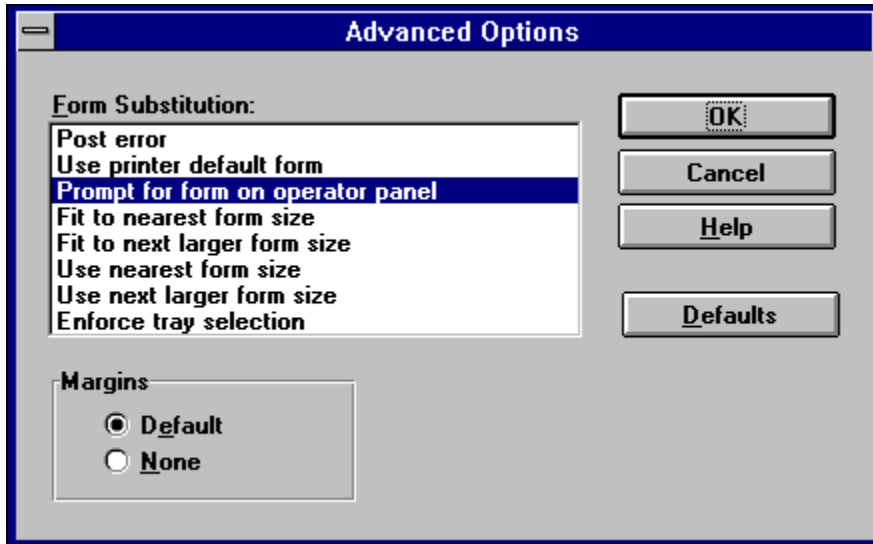
(Note: you can also use the tab key to advance through selectable areas in the image below.)



Advanced Paper

For more information about individual selections in this dialog box, choose that option on the dialog image below.

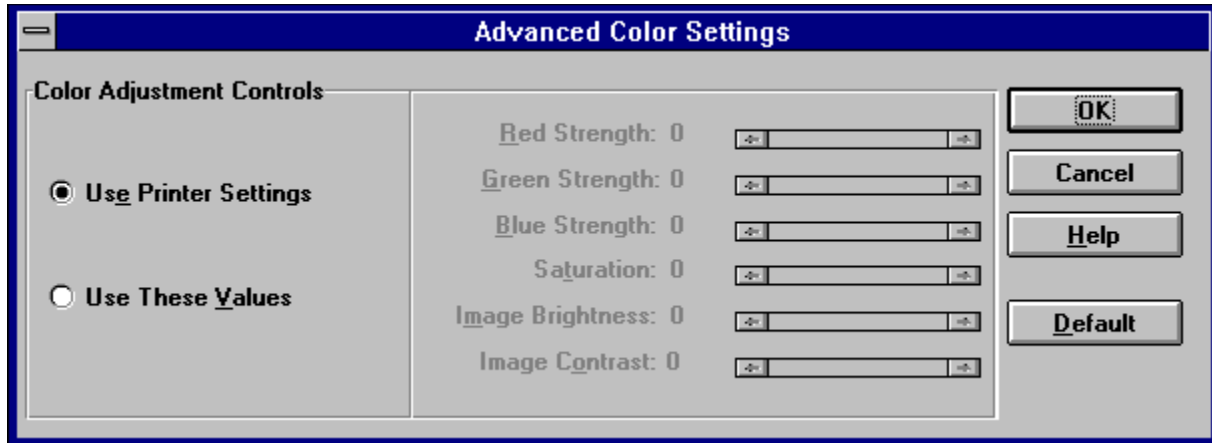
(Note: you can also use the tab key to advance through selectable areas in the image below.)



Advanced Color

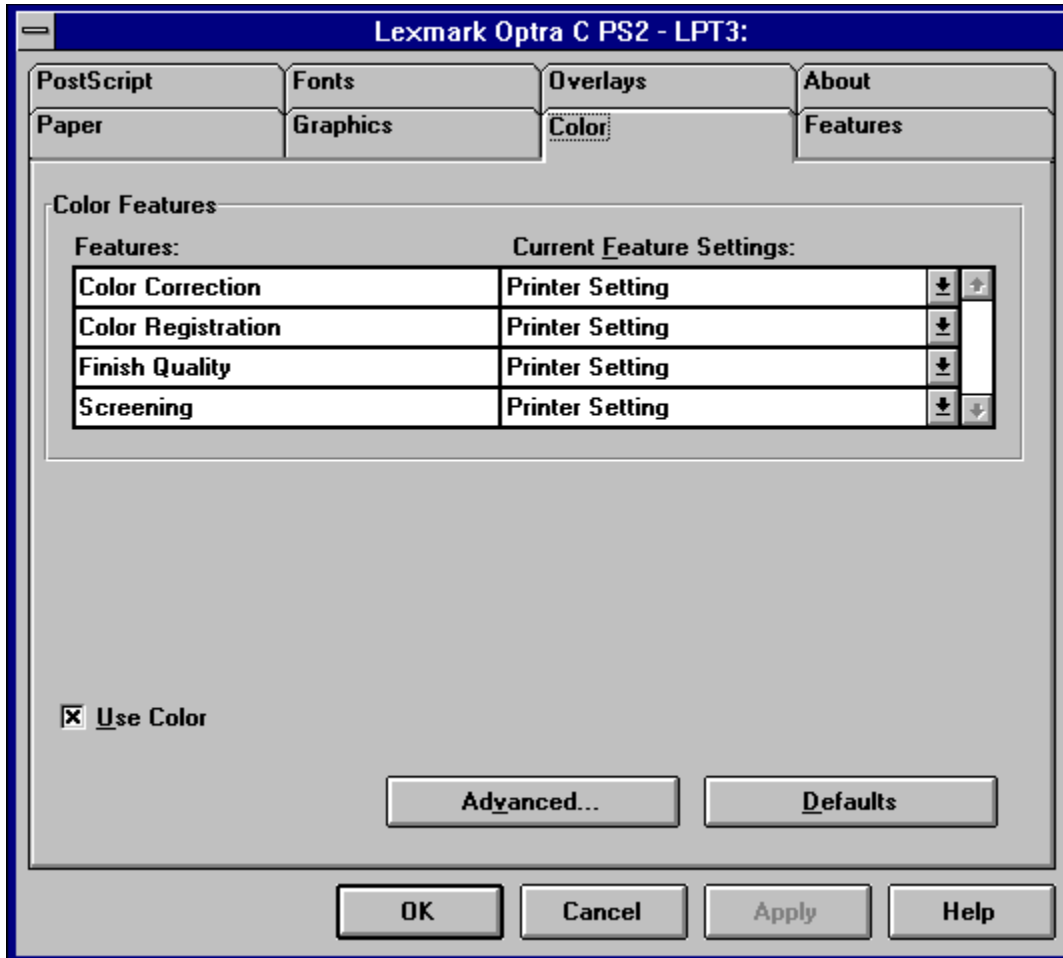
For more information about individual selections in this dialog box, choose that option on the dialog image below.

(Note: you can also use the tab key to advance through selectable areas in the image below.)



Color

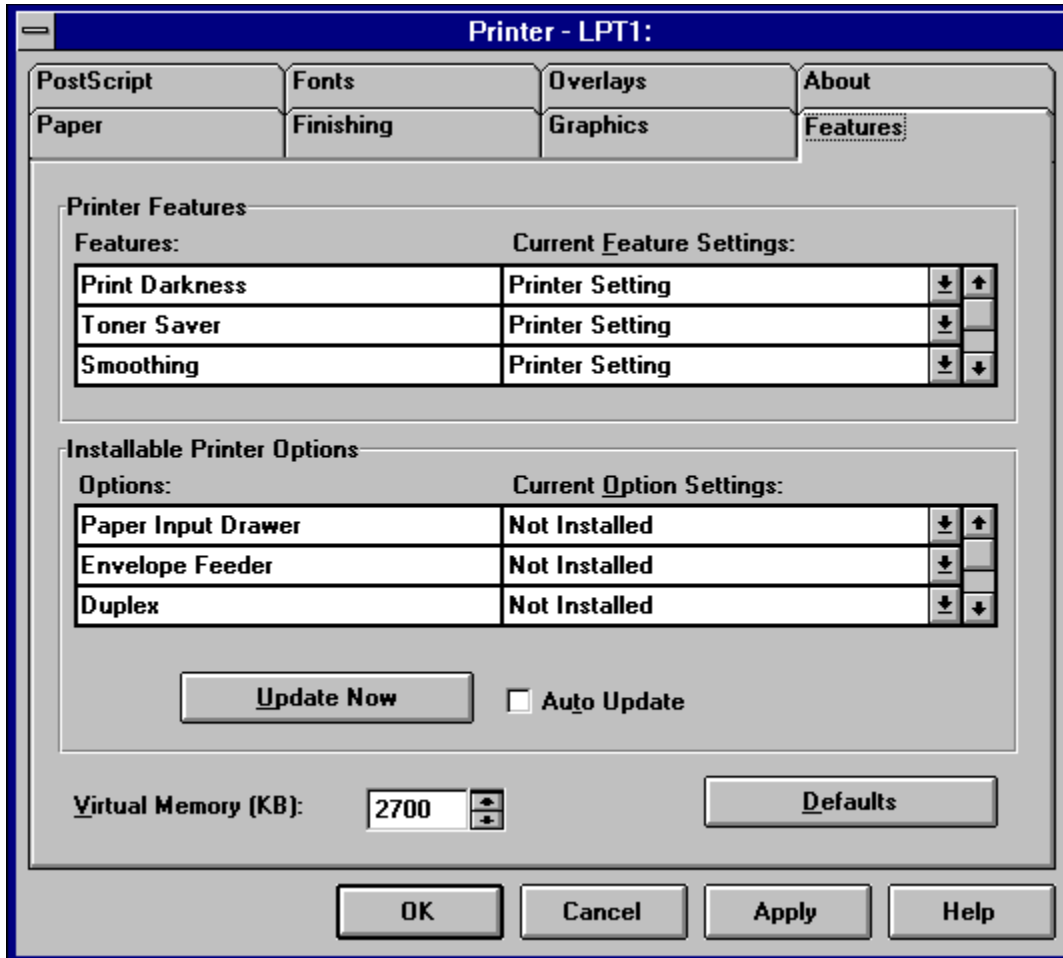
For more information about individual selections in this dialog box, choose that option on the dialog image below. This dialog will not appear for your printer if it is not a color printer. (Note: you can also use the tab key to advance through selectable areas in the image below.)



Features

For more information about individual selections in this dialog box, choose that option on the dialog image below.

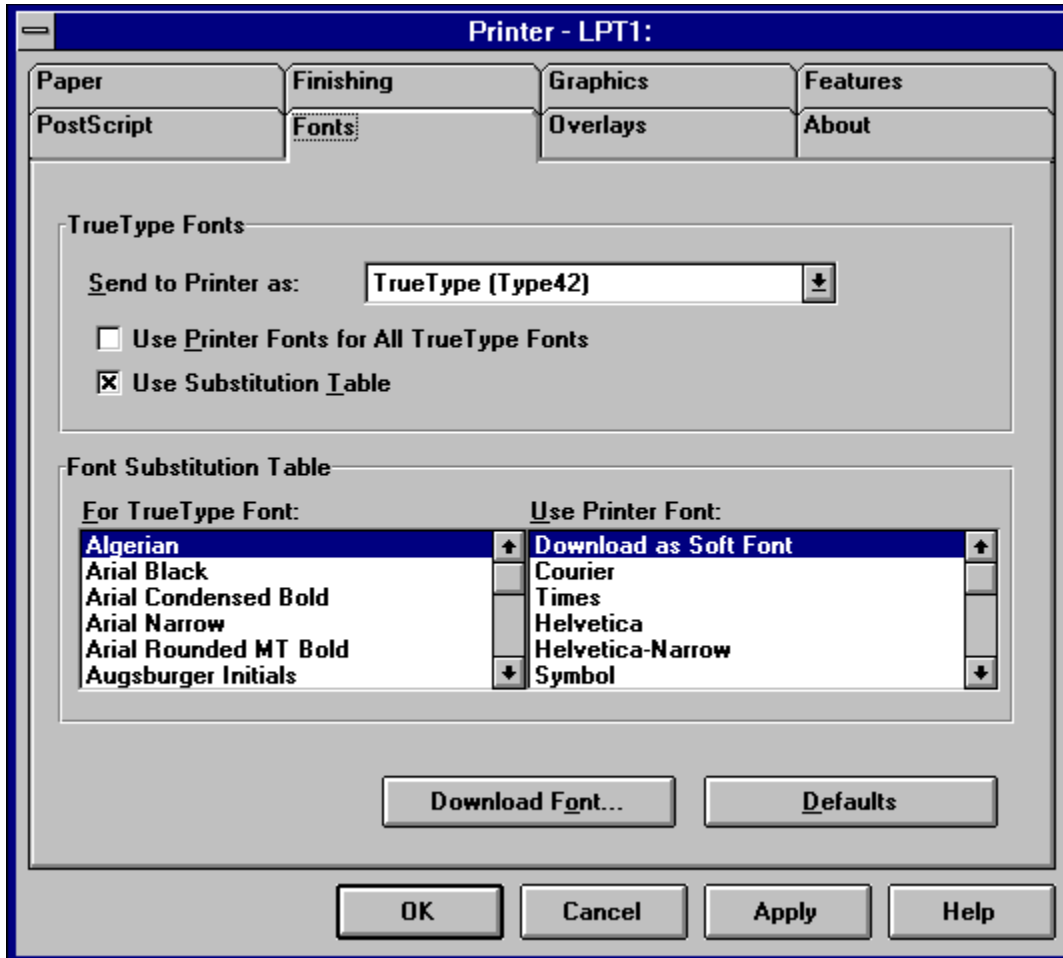
(Note: you can also use the tab key to advance through selectable areas in the image below.)



Fonts

For more information about individual selections in this dialog box, choose that option on the dialog image below.

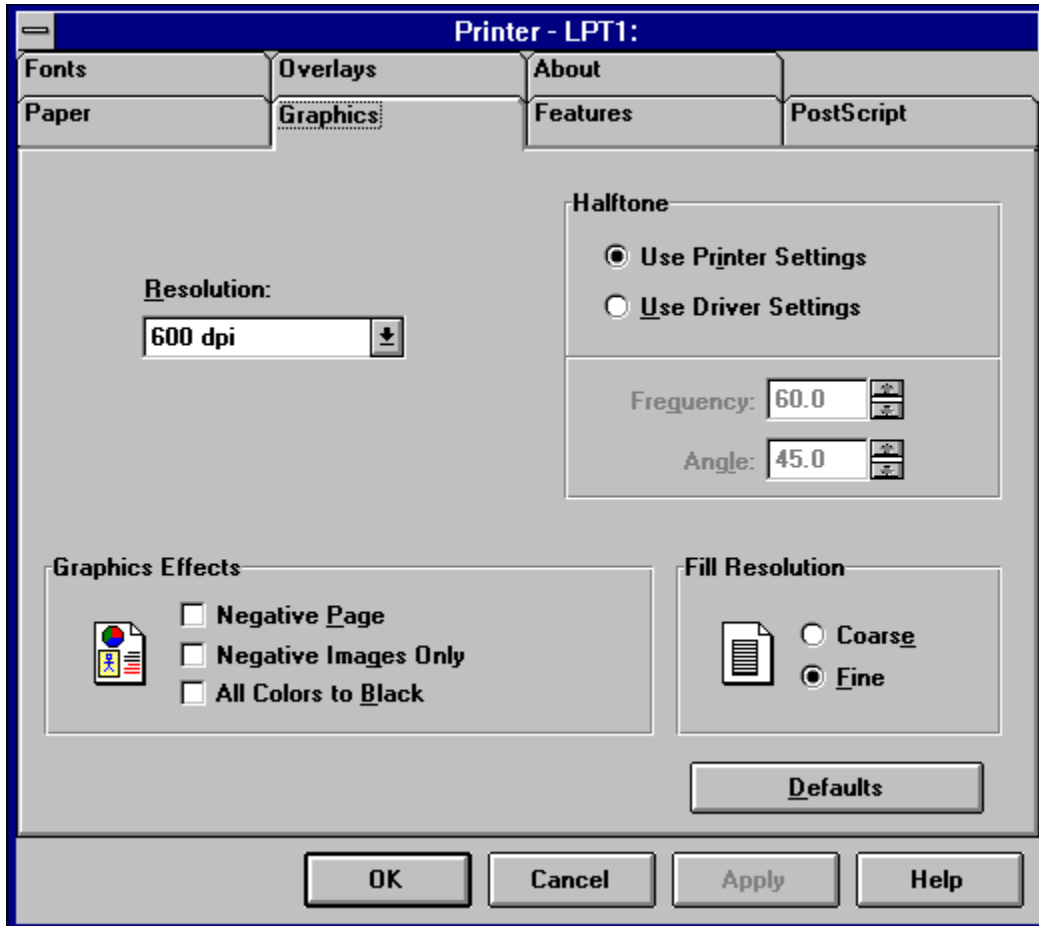
(Note: you can also use the tab key to advance through selectable areas in the image below.)



Graphics

For more information about individual selections in this dialog box, choose that option on the dialog image below.

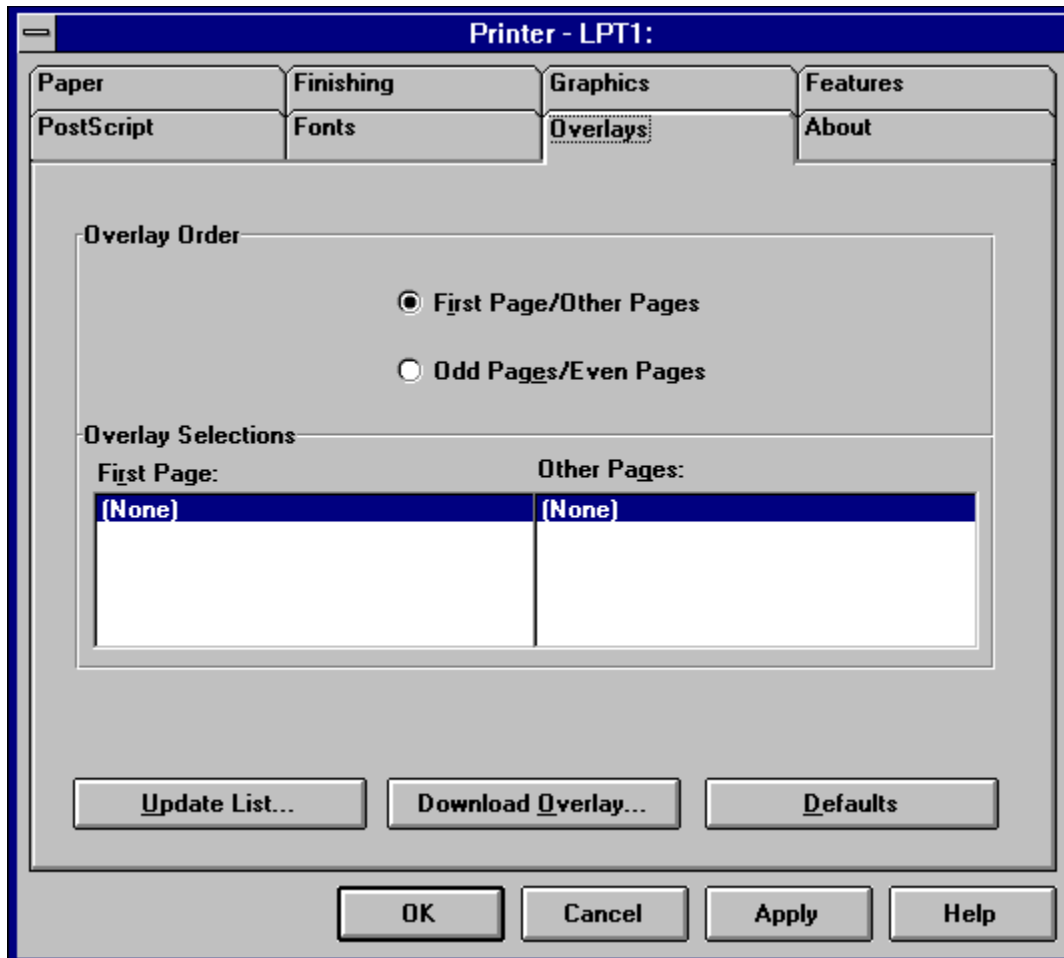
(Note: you can also use the tab key to advance through selectable areas in the image below.)



Overlay

For more information about individual selections in this dialog box, choose that option on the dialog image below.

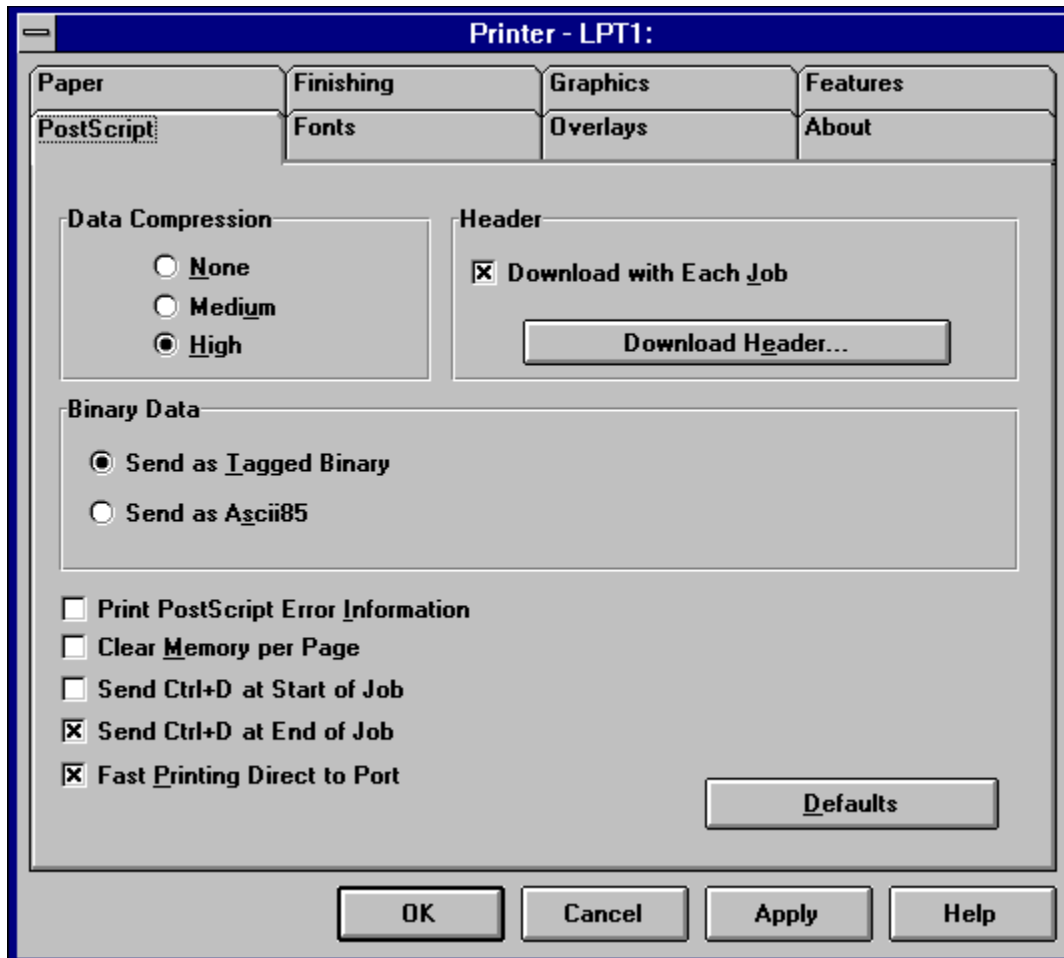
(Note: you can also use the tab key to advance through selectable areas in the image below.)



PostScript

For more information about individual selections in this dialog box, choose that option on the dialog image below.

(Note: you can also use the tab key to advance through selectable areas in the image below.)



User Forms

For more information about individual selections in this dialog box, choose that option on the dialog image below.

(Note: you can also use the tab key to advance through selectable areas in the image below.)

User Forms

Defined User Forms

Form Type	Width	Length	Envelope
-----------	-------	--------	----------

New/Selected User Form Data

Form Type:

Form Size

Width:

Length:

Units

English

Metric

Envelope

OK

Cancel

Help

Defaults

Add

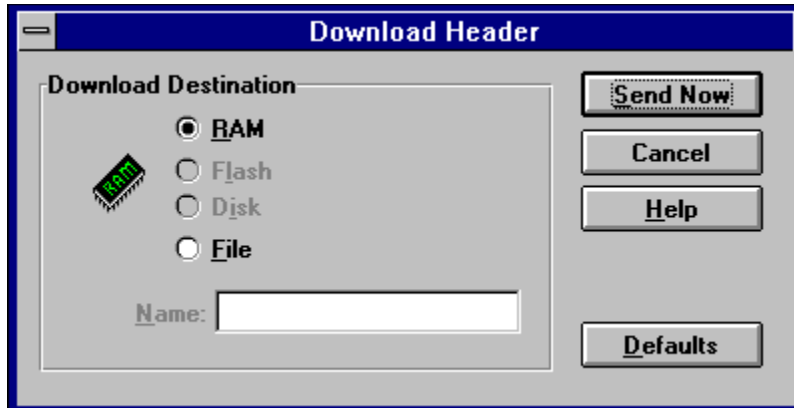
Change

Delete

Download Header

For more information about individual selections in this dialog box, choose that option on the dialog image below.

(Note: you can also use the tab key to advance through selectable areas in the image below.)



About all colors to black

How to set all colors to black

About compressing data

How to compress data

[About copies](#)

[How to print multiple copies](#)

[About duplexing](#)

[How to print on both sides of the paper](#)

[About Encapsulated PostScript \(EPS\) files](#)

[How to create Encapsulated PostScript \(EPS\) files](#)

[About fast printing direct to port](#)

[How to enable fast printing direct to port](#)

[About fonts](#)

[How to download and store fonts in the printer](#)

[How to send fonts when printing each page](#)

[How to specify format for sending TrueType fonts to your printer](#)

[How to use the closest matching printer fonts](#)

[How to use the Font Substitution Table](#)

[No download destinations are available](#)

[About forms](#)

[How to choose a form source](#)

[How to choose the form type](#)

[How to create a custom form size](#)

[How to specify printer action when the selected form is not available](#)

[How to use an overlay](#)

[About halftoning](#)

[How to specify halftoning](#)

[About header information](#)

[How to send header information each time you print](#)

[How to send header information to a computer file](#)

[How to send header information to printer memory \(RAM\)](#)

[How to automatically update the list of installed options each time the driver is used](#)

[How to immediately update the list of installed options](#)

[How to manually update an option](#)

[About multipage printing](#)

[How to print multiple page images on one form](#)

[Multipage printing option doesn't print as expected](#)

[About printing negative images](#)

[How to print negative images in your document](#)

[About printing negative pages](#)

[How to print negative pages of your document](#)

[About options](#)

[Bidirectional update failed](#)

[How to automatically update the list of installed options each time the driver is used](#)

[How to immediately update the list of installed options](#)

[How to manually update an option](#)

[Update features unavailable](#)

[About overlays](#)

[Documents don't print with overlays](#)

[How to create an overlay and store it in your printer](#)

[How to create an overlay file on your system and store it in the printer](#)

[How to create an overlay](#)

[How to download an existing overlay](#)

[How to use an overlay](#)

[No download destinations are available](#)

[About finish quality](#)

[How to choose a form source](#)

[How to choose the form type](#)

[How to create a custom form size](#)

[How to enable automatic tray linking](#)

[About printing PostScript error information](#)

[How to print PostScript error information](#)

[About all colors to black](#)

[About duplexing](#)

[About multipage printing](#)

[About printing negative images](#)

[About printing negative pages](#)

[About printing](#)

[How to enable fast printing direct to port](#)

[How to print mirror images of your document](#)

[How to print multiple copies](#)

[How to print multiple page images on one form](#)

[How to print negative images in your document](#)

[How to print negative pages of your document](#)

[How to print on both sides of the paper](#)

[How to print PostScript error information](#)

[How to set all colors to black](#)

[About print orientation](#)

[How to specify print orientation](#)

[About print quality](#)

[How to change the fill pattern resolution](#)

[How to use smoothing](#)

[Print Quality](#)

[About the Printer Properties dialog box](#)

[How to open the Printer Properties dialog box](#)

Multipage printing option doesn't print as expected

Busy light comes on, but documents don't print

Documents don't finish printing

Documents don't print with overlays

Documents print slowly

Documents print with black and white type reversed

Documents print with unexpected characters or graphics

Files copied to the printer don't print

Fonts don't print as expected

Gray shades print as black

[How to change the fill pattern resolution](#)

[How to specify printing resolution](#)

About scaling

How to reduce or enlarge your document

About Print Quality Enhancement Technology (PQET)

How to use smoothing

Smoothing

[About automatic tray linking](#)

[How to enable automatic tray linking](#)

[Tray Linking](#)

[About virtual memory](#)

[How to specify the amount of virtual memory](#)

Features list

The Features tab on the Printer Properties dialog box lists software functions and features available on your printer.

The list below is a list of all features available on all printer models. Your printer may or may not support all features listed. Select an item from the list for more information about that feature.

[Collate Copies](#)

[Image Enhancement](#)

[PictureGrade](#)

[Port Rotation](#)

[Print Darkness](#)

[Print Quality](#)

[Smoothing](#)

[Toner Saver](#)

[Tray Linking](#)

Color Features List

The Color tab on the Printer Properties dialog box lists software color functions and options available on your printer.

The list below is a list of all color features available on all printer models. Your printer may or may not support all features listed. Select an item from the list for more information about that feature. Your printer may or may not support all features listed.

Note: The Color Tab will not be present if your printer does not use color.

[Blue Adjust](#)

[Color Balance](#)

[Color Correction](#)

[Color Registration](#)

[Finish Quality](#)

[Image Diffusion](#)

[Screening](#)

No Help is available for this control.

Finisher Features List

The Finisher tab on the Printer Properties dialog box lists finishing functions and options available on your printer.

The list below is a list of all finisher features available on all printer models. Your printer may or may not support all features listed. Select an item from the list for more information about that feature. Your printer may or may not support all features listed.

Note: The Finisher Tab will not be present if your printer does not support any finisher features.

[Collate Copies](#)

[Output Bin](#)

[Staple](#)

[About Image Enhancement Technology](#)

[How to specify Image Enhancement Technology](#)

Specifies the printing resolution in dots per inch (dpi). Generally, higher resolution settings produce higher quality graphics; however, documents may take longer to print when using a higher resolution.

Specifies a less dense fill pattern (shading lines spaced farther apart).

Specifies a more dense fill pattern (shading lines spaced closer together).

Specifies that you want to use the frequency and angle settings you enter below.

Specifies that you want to use the halftone settings of the printer.

Specifies the number of lines per inch you want to use for halftone screens.

Specifies the angle of the halftone screen.

Prints your document like a photographic negative: all black areas become white, all white areas become black, and all dark-gray areas become light gray.

Prints the images in your document with inverted gray scales. The images in your document print like a photographic negative: all black areas in images become white, all white areas in images become black, and all dark-gray areas in images become light gray.

Converts any color to solid black. This creates a print in solid black and white, like a silhouette. This option is useful if you are losing detail in light-colored objects.

Resets all selections on this tab to their default values.

Defines the size of the paper or envelope you want to print on.

Lists the form sources. A diamond indicates the source is available on your printer. You may want to choose an unmarked form source if you are printing to a file and intend to print that file on a printer with the form source you select installed.

Lists the available output choices. You can print to the printer, to a file, to an EPS-format file, to an Overlay format file, or to an overlay downloaded directly to the printer.

If you print to a file and later send that file to a different printer, you should be careful about selecting options which depend upon information stored in a specific printer. Examples would be using overlays, headers, or fonts which are stored in a specific printer.

Specifies the name of the output file if you selected Output to File. You may enter a drive, directory, and file name. If you enter the name of an existing file, you will be prompted to verify that you want to overwrite the existing file before it is actually overwritten.

If you do not enter a file name in the File Name text box but have selected File in the Output To list box, you will be prompted to specify a file name when the print job starts.

Specifies upright letter orientation where the page is taller than it is wide.

Specifies the horizontal page orientation where a page is on its side, or wider than it is tall.

Rotates the document around its center line. The printed image of the document looks like it would if it were held up to a mirror. You can use Mirror with any other orientation option, such as Rotate 180°, or Landscape.

Rotates the document "upside down." You can use this option with any other orientation option.

Specifies the number of uncollated copies you want to print.

The Copies option in the Print dialog box of the program usually overrides this option.

In most cases, specifying the number of copies here prints uncollated copies faster. Specifying the number of copies from your Windows program may slow down printing but may enable you to print collated copies if your program supports this feature.

Provides a space for you to type a new scaling setting. A value smaller than 100 reduces your document and a value greater than 100 enlarges your document. For example, if you type 50, the document prints at half its original size. If you type 200, the document prints twice as large as its original size.

Some Windows programs also include a scaling option. In this case, you might want to experiment to determine whether the scaling option in this box or the one in the program works best. Using the two options simultaneously may produce unexpected results.

Specifies that you want to print on only one side of the paper (simplex printing). (Duplex printing is not available on all printers.)

Specifies orientation of the printing on the back (even-numbered) pages in relation to the printing on the front (odd-numbered) pages. This is important if you intend to bind the pages into a book.

Long-edge binding in portrait orientation is used for conventional layouts. Long-edge binding in landscape orientation is used for accounting ledgers and spreadsheets.

Specifies orientation of the printing on the back (even-numbered) pages in relation to the printing on the front (odd-numbered) pages. This is important if you intend to bind the pages into a book.

Short-edge binding in portrait orientation is often used for calendar-like books. Short-edge binding in landscape orientation is another variation of conventional book layouts.

Click this to change User Forms. On the User Forms dialog box, you can define or modify a form type.

Click this to change Advanced Options. On the Advanced Options dialog box you can specify the action you want the printer to take if the requested form is not available.

Provides a space to enter the form name. It is recommended that you enter meaningful names that indicate form size and type. You can enter letters, numbers, and spaces.

Specifies the width of the paper or envelope you are defining.

Specifies the length of the paper or envelope you are defining.

Specifies inches as the units of measure for the form size text boxes.

Specifies millimeters as the unit of measure for the form size text boxes.

Specifies whether the form type being defined is an envelope.

Shows the aspect ratio of the form you are defining.

After you have entered the information about the form, click this to create the new form type.

After selecting an existing form type, click this to change the definition of that form.

After selecting an existing form type, click this to delete that form.

Specifies the action you want the printer to take if the requested form is not available:

- Post error: Generates a PostScript language error message. Your job does not print.
- Use printer default form: Uses the form from the last job.
- Prompt for form on operator panel: Displays a **Load Paper** message. Load the appropriate form.
- Fit to nearest form size: Selects the form that is the closest in size to the requested form and scales the image to fit on the form.
- Fit to next larger form size: Selects the form that is the next larger size and centers the image on the form.
- Use nearest form size: Selects the form that is the closest in size to the requested form. The image is not scaled.
- Use next larger form size: Selects the form that is the next larger size. The image is not scaled.
- Enforce tray selection: Prints on the form installed in the requested form source without regard to the form size. The image is not scaled.

Sets the printing area to the size of the form.

Sets the margins to the area in which the printer can print. The printing area is usually about one-quarter inch in from each side of the paper.

Specifies whether a border is drawn around each page image on a multipage form.

Specifies that page images print in rows across your form.

Specifies that page images print in columns down your form.

Specifies the order page images print on the form.

Shows how your form will look. The graphic changes to reflect your choice.

List the available Multipage Printing options. Multipage Printing lets you choose the number of page images to print on a form. 1 Up prints one page image per sheet. 2 Up prints two page images per sheet, and so on.

Lists the current defined user forms. User Form Data settings reflect the selected user form properties.

Help is available for each item in this group. Click **?** at the top of the dialog box, and then click the specific item you want information about.

Specifies that you do not want to compress images before sending them to the printer.

Compresses images before sending them to the printer to reduce the size of the print job and reduce the time required to send the print job. Medium compression takes less time to process the print job than High, but produces a slightly larger job that takes more time to send to the printer. Whether or not this improves overall print time depends on the speed of your computer and the size of the images in the print job.

Compresses images before sending them to the printer to reduce the size of the print job and reduce the time required to send the print job. High compression takes more time to process the job than Medium, but produces a smaller print job that takes less time to send to the printer. Whether or not this improves overall print time depends on the speed of your computer and the size of the images in the print job.

Ensures that binary data such as font and image data are not interpreted as printer commands. Select Send as Tagged Binary to use the tagged binary protocol. This is typically the most efficient selection.

Ensures that binary data such as font and image data are not interpreted as printer commands. Select Send as AscII85 to encode binary data using an AscII85 filter. The data is decoded in the printer.

Prints information about PostScript language errors you encounter while printing documents. This information may be useful if you need to contact product support.

Clears printer memory and resends fonts to the printer after each page is printed.

If you are having trouble printing a document which contains a large number of TrueType or downloaded fonts, try selecting this box. Selecting this option may slow down printing but ensures that large documents with many TrueType or downloaded fonts print correctly (provided that the amount of memory needed to print a page does not exceed the amount of available printer memory).

If you have accurately specified the amount of memory your printer has in the Virtual Memory (KB) option, you do not need to select this option. The printer driver automatically clears the fonts from your printer memory when memory space is low.

Sends your print job directly to the printer, bypassing the Windows Print Manager. Selecting this check box usually decreases the time required to get printed output, but may increase the time before you can do additional work in your program.

Downloads the required header at the beginning of each job. Sending the header with the job is recommended when you print to a file that will be printed later at a different location.

If you do not select this check box, the printer driver uses the header that has been stored either in printer memory, flash, or disk. If the header has not been stored in the printer, your job will not print. Storing the header in the printer saves time because it reduces the amount of data that must be sent for each job.

Click this to display a dialog box that lets you specify where to store the header, and then sends the header to that location.

Stores the header in printer memory.

Stores the header in flash memory in the printer.

Stores the header in the disk in the printer.

Stores the header in a file on the computer. If you choose File, you must type a file name in the Name text box.

Specifies the header file name if you chose File as the download destination and provides a space for you to type the name.

After selecting the Download Destination, click this button to begin downloading the header.

Specifies whether CTRL+D is sent to the printer at the start of your print job. CTRL+D may be needed when printing across multiple operating systems. For example, you might need to turn CTRL+D off when you print to file using Windows but will send the file to the printer from a Macintosh®. Generally, the default setting should be used.

Specifies whether CTRL+D is sent to the printer at the end of your print job. CTRL+D may be needed when printing across multiple operating systems. For example, you might need to turn CTRL+D off when you print to file using Windows but will send the file to the printer from a Macintosh®. Generally, the default setting should be used.

Specifies whether you want to use color or gray scale printing.

If you specify the All Colors to Black check box in the Options dialog, colors print as solid black. There will be no color in your printed output even if the Use Color check box is chosen.

Prints without adjusting or matching colors. This setting is recommended if you are using an application with color matching options.

Specifies whether you want the colors in your document to be adjusted before printing so that the printed page more closely matches the colors on your screen.

If you choose this option, click one of radio buttons to specify how you want the colors adjusted.

Prints using the printer color settings.

Choose Saturation if you are printing a chart or using bright colors.

Choose Contrast for photographs or pictures where the colors blend together.

Choose Colormetric if your document has a color that you need an exact match for and the printer has that specific color of ink.

Adjusts the amount of red in your printed output. A positive value increases the amount of red; a negative value decreases it. A value of **0** does not alter the output.

Adjusts the amount of green in your printed output. A positive value increases the amount of green; a negative value decreases it. A value of **0** does not alter the output.

Adjusts the amount of blue in your printed output. A positive value increases the amount of blue; a negative value decreases it. A value of **0** does not alter the output.

Adjusts the amount of ink used when printing. This will affect the overall lightness or darkness of your printed output. A positive value increases the saturation, yielding a darker output. A negative value decreases the saturation resulting in a lighter output.

Adjusts the brightness of images only. Text will not be affected by this setting.

Adjusts the contrast of images only. Text will not be affected by this setting.

Prints using the printers color settings. This option is recommended.

Prints using the values you select on the Color Adjustment slider controls.

The Color Adjustment Controls settings alters the colors in your printed output. Select the Use Printer Settings radio button if you are using Color Matching or Color Correction.

Click this to change Advanced Color settings.

Specifies the format for downloading TrueType fonts to the printer.

Specifies whether you want to print using the closest matching printer fonts in place of the TrueType fonts. Select this check box to print with the closest matching printer fonts in place of the TrueType fonts. The driver determines which printer fonts most closely match the TrueType fonts in your documents. If you want to select specific printer fonts to print in place of TrueType fonts, you need to edit the Substitution Table and then select the Use Substitution Table check box.

Specifies whether you want to print your documents with printer fonts that you specify. Use the Substitution Table to specify the printer fonts you want to substitute for the TrueType fonts.

Lists the TrueType fonts. In the list box, click the TrueType font you want to replace, then click the printer font you want to use as a substitute.

Lists the printer fonts you can use in place of TrueType fonts. In the list box, click the TrueType font you want to replace, then click the printer font you want to use as a substitute. If you select Download as Soft Font, the driver prints the selected TrueType fonts in the format you specified in the Send to Printer As list box.

Click this to display the Download Fonts dialog box. That dialog box allows you to store Adobe Type 1 fonts in the printer.

Specifies First Page and Other Pages overlays. Use this if you want to use one overlay for the first page and another for all other pages.

Specifies Odd Pages and Even Pages overlays. Use this if you want to use one overlay for all odd pages and another for all even pages.

If Duplex is selected, this specifies Front Side and Back Side overlays. Use this if you want to use one overlay for all front sides and another for all back sides.

If First Page/Other pages is selected, lists the overlays available for use on the first printed page. If duplex is selected, the specified overlay is used on the first side of the first sheet. Click the overlay you want to use.

If Odd Pages/Even Pages is selected, lists the overlays available for use on odd pages. Click the overlay you want to use, or click None for no overlay.

If First Page/Other pages is selected, lists the overlays available for use on all pages of the job after the first page. Click the overlay you want to use, or click None for no overlay.

If Odd Pages/Even Pages is selected, lists the overlays available for use on even pages. Click the overlay you want to use.

Displays a dialog box that allows you to edit the list of available overlays in the Overlay Selections list boxes. This does not change what is actually in the printer; it only changes the list maintained by the driver. You may want to use this option to delete overlay names from the list if you have deleted the overlays from the printer. You may also want to use this option to add overlay names to the list if you have just connected to a LAN attached printer which has overlays stored in its flash or disk.

Click this to display the download overlay dialog box.

Lists the features and options available on your printer and the current setting for each feature. To change a setting, open the Current Feature Setting list box and select the setting you want. For a description of all features, click the Features button in this help topic. Not all of the features listed in the Help may be available in your printer.

{button Features, Alink(feature)}

Lists the color features and options available on your printer and the current setting for each feature. To change a setting, open the Current Color Feature Setting list box and select the setting you want. For a description of all color features, click the Color Features button in this help topic. Not all of the features listed in the Help may be available in your printer.

{button Color Features, Alink(color feature)}

Generally, options must be purchased separately. Your printer Users Guide lists options available for your printer along with a description of each.

The Features tab of the Printer Properties dialog box lists the options and the status of each. After installing an option, you might want to update the status of the option using the Features tab.

Each time you open the PostScript driver, the options list is updated if you have the Auto Update check box checked. You can initiate an update at any time by clicking Update Now.

Searches the printer for installed options. After installing a new printer option, you may want to click this to reflect the availability of that option in other areas of the driver.

Specifies whether the printer searches for installed options each time the printer driver is opened.

Specifies how much virtual printer memory is available in your printer. The Virtual Memory value determines how font information is sent to your printer when printing documents that contain TrueType and downloaded fonts.

This value is automatically updated when the Current Option Setting of the Printer Memory Option is changed by either an automatic update or by a manual update. The value will be the appropriate Virtual Memory value for the amount of Printer Memory that is installed in the printer. If you add more memory to your printer, you can increase this value.

If your document contains several different fonts and is not printing correctly, try lowering this value. Lowering the value clears the printer memory more often, deleting any unnecessary font information.

Features list

The Features tab on the Printer Properties dialog box lists software functions and features available on your printer.

Click the Features button in this help topic to view a list of all features available on all printer models. Your printer may or may not support all features listed.

{button Features, Alink(feature)}

Collate Copies

The Collate Copies feature allows you to enable, disable, or use the printer default for printer resident multi-copy collation. If your printer does not support collation in the printer, this option will not be selectable and you must use a collate feature in your Windows program (if available) to obtain collated copies.

Note

For best performance, use the printer driver to set Collate Copies to On and Copies to 1. Use the Windows program to request the number of copies you want and request uncollated copies. With most applications, this results in only one copy of the job being sent to the printer. The printer then produces multiple collated copies.

Print Darkness

The Print Darkness feature lightens or darkens printed elements in your print jobs. Changing the Print Darkness setting actually increases or decreases the amount of toner used to print each pixel.

- Select a Lighter setting if you want finer line width, higher definition graphics, and a wider variety of gray scales.
- Select Normal for the typical darkness which should satisfy most of your printing requirements.
- Select a Darker setting for the boldest text and the darkest gray scales.

If your printer supports Toner Saver or Draft, select Toner Saver or Draft to get the most from your toner supply. Draft is not recommended when printing graphics. When either Toner Saver or Draft is selected, print quality may be reduced.

Toner Saver

When Toner Saver is turned on, the printer uses less toner to print. You can use the Print Darkness setting to vary the amount of toner used. The Toner Saver option is not recommended when printing graphics, as print quality may be reduced when Toner Saver is turned on.

Print Quality

Print Quality specifies the overall print quality of your color document and affects the time required to print. If Print Quality is set to Pause Mode, the printhead pauses for eight seconds after each pass across the page. This slows print time considerably. In most cases, the Quality setting provides a comparable output without the slower print time.

Image Enhancement

Image Enhancement Technology (IET) improves the print quality of images, halftones, and fills producing a continuous tone effect but requires additional printer memory and may slow print time. If your printer supports Image Enhancement, it overrides Smoothing (PQET) and PictureGrade settings when printing at 600 dpi.

Smoothing

Turning on the smoothing option enables the default for Print Quality Enhancement Technology (PQET). Smoothing improves the quality of text by smoothing the edges of characters and lines. While it improves the look of text and graphics, it can sometimes cause images to look blurry. If your printer supports Smoothing, it is available for both 300 and 600 dpi resolutions. Smoothing offers the most benefit at 300 dpi. Turning on Image Enhancement Technology (IET) at 600 dpi overrides Smoothing settings.

PictureGrade

Turn on PictureGrade to optimize halftone screens. If your printer supports PictureGrade, it is only available at 600 dpi. Image Enhancement Technology (IET) overrides PictureGrade settings.

Tray Linking

Specifying automatic tray linking treats multiple trays as if they were one tray. Your printer will not warn you it is out of paper until all linked trays are empty.

Various printer models draw paper differently. Some printers completely empty each tray before automatically feeding from the next linked tray. Other printers balance tray usage by feeding from all linked trays simultaneously. Your printer must support tray linking for the trays you want to use and the same size form must be loaded in all linked trays.

Port Rotation

Turning on Port Rotation forces the printer to check other ports on the printer for jobs after your print job is done. Otherwise, if Port Rotation is inactive, the printer continues to print jobs from the current port until the port is idle for a period of time. The printer then prints jobs from the next active port. The Port Rotation setting only affects your current print job.

Color Features List

The Color tab on the Printer Properties dialog box lists software functions and options available on your printer.

Click the Color Features button in this help topic to view a list of all color features available on all printer models. Your printer may or may not support all features listed.

Note

The Color Tab will not be present if your printer does not use color.

{button Color Features, Alink(color feature)}

Blue Adjust

The Blue Adjust feature causes the blues and purples printed in your document to contain less magenta and, thus, appear less purple than the output with Blue Adjust turned off.

By selecting the appropriate setting for Blue Adjust you can affect all printing or only data sent to the printer as an image.

Color Balance

The Color Balance setting is used to control the density of ink coverage when printing on various media types such as transparencies or coated paper.

Color Registration

Color registration affects how many times the transfer drum rotates when transferring the toner to the paper.

High Quality rotates the transfer drum an extra revolution compared to **High Speed**. This reduces throughput but optimizes registration of the magenta plane with the other planes resulting in higher quality.

Image Diffusion

Image Diffusion is used to control the appearance of printed images if the Color Screening option is set to ColorGrade. If Image Diffusion is set to On, the printer implements a special screening procedure to enhance the quality of most images. This screening applies only to the images in your output; text and graphics are not affected.

The Image Diffusion setting is ignored if the Screening options is set to Contone.

Screening

The Screening feature lets you choose the way the printer distributes toner on the page to print halftone images.

Choose Enhanced or ColorGrade if you are not sure which setting to use.

- Contone lets you print your document with a continuous tone. Use Contone if your document contains primarily text and line drawings.
- Stochastic lets you print your document with a more diffuse screening pattern. Use Stochastic screening when you want to print smooth color gradations or photo-realistic images.
- Enhanced or ColorGrade optimizes the printer default halftone frequency. If you are selecting colors from a Pantone table and wish to get Pantone matching colors, you must select Enhanced.

Note

- Your printer may or may not support all options listed.

Color Correction

Color correction lets you modify the colors used to print your document.

- Off prints without Color Correction. This is the recommended setting when you are using application software that does its own color correction.
- Display prints colors that approximate the colors on a standard computer display screen.
- Vivid adds black and causes the blues and purples printed in your document to contain less magenta, resulting in more saturated, or darker, colors.
- SWOP prints colors that approximate colors on a standard printing press.

Note

- Your printer may or may not support all options listed.

Finish Quality

Finish Quality lets you choose the finish of your document. Choose from the following settings.

- High Gloss for a shiny, bright finish.
- Medium Gloss for a normal finish.
- Low Gloss for a matte finish.

specifies the angle and placement of the dots in a halftone screen. Specifying a different halftone frequency may produce unexpected results.

Finishing features list

Click the Features button in this help topic to view a list of all features available on all printer models. Your printer may or may not support all features listed.

{button Finishing Features, Alink(finish)}

Output Bin

The Output Bin feature lets you select where your paper will stack if your printer supports multiple output bins. Not all items listed may be available.

Staple

The Staple feature lets you select how your paper is stapled. Not all items listed may be available.

List of installed options doesnt automatically update

If you installed an option but it doesn't appear in the list of installed options, click Update Now on the Features tab.

To enable the printer to automatically update the list the next time you install an option, select the Auto Update option.


 [Related Topics](#)

Documents print slowly

If a document takes a long time to print, deselect the Clear Memory per Page option on the PostScript tab.

Note

- If the document contains a lot of TrueType or downloaded fonts, leave this option selected.

 [Related Topics](#)

Busy light comes on, but documents don't print

If the printer Busy light comes on after you send a document to print, but returns to the Ready state without printing the document, select the Print PostScript Error Information option on the PostScript tab. This option allows you to view printer error messages. You can also set a similar option from the printer operator panel.

 [Related Topics](#)

Document doesn't finish printing

If your document doesn't finish printing, select the Clear Memory per Page option on the PostScript tab. This option increases print time, but allows you to print documents containing a lot of graphics or a large number of fonts that otherwise would not print with the amount of memory installed in the printer.

 [Related Topics](#)

Multipage printing option doesnt print as expected

If multiple page images on a sheet (N-up) don't print as you expected, make sure you've chosen the correct Multipage Printing option on the Paper tab for the effect you want. The graphic on the right shows how the layout of your document will look.

 [Related Topics](#)

Fonts don't print as expected

Your printer may be substituting printer fonts for the TrueType fonts you selected in your document. To correct this problem, download the TrueType font you want as a soft font to the printer.

1. Click the Fonts tab.
2. Make sure the option "Use Printer Fonts for All TrueType Fonts" is not selected.
3. In the Font Substitution Table, highlight the TrueType font you want in the left column.
4. In the right column, select Download As Soft Font.

■ [Related Topics](#)

Documents print with black and white type reversed

If a document with a white background and black type prints with a black background and white type, make sure the Negative Page and Negative Images options on the Graphics tab are not selected.

■ Related Topics

Gray shades print as black

If your document contains grayscale images, but prints with black only and resembles a silhouette, turn off All Colors to Black on the Graphics tab.

■ [Related Topics](#)

Documents don't print with overlays

After you create an overlay and download it to the printer, you must select the overlay from the driver before you can use it to print a document.

1. Click the Overlays tab.
2. Highlight the name of the overlay that you want to use to print your document.
3. Print your document as you normally would.

Be sure to deselect the overlay after printing. Otherwise, other documents will print with the overlay.

■ [Related Topics](#)

Documents print with unexpected characters or graphics

If your document prints with extra characters or graphics on the pages, make sure there are no overlays selected in the Overlays tab.

- [Related Topics](#)

Files copied to the printer don't print

If you print your document to a file and copy the file to the printer, but it doesn't print, try the following:

1. Go to an MS-DOS prompt.
2. Type the following command and press Enter: `copy filename lpt1: /b`

Note

- Make sure you include **/b** at the end of the command.
- [Related Topics](#)

Update features unavailable

If the Update Now button or the Auto Update checkbox is grayed, the printer driver is unable to communicate bidirectionally with your printer.

Bidirectional communication between your computer and printer is only possible with the right connection. Your printer must connect to your computer parallel port directly using an IEEE 1284 compliant cable. Bidirectional communication over a network is only possible if you use an IP or IPX logical port.

- [Related Topics](#)

Bidirectional update failed

Bidirectional communication between your computer and printer is only possible with the right connection. Your printer must connect to your computer parallel port directly using an IEEE 1284 compliant cable. Bidirectional communication over a network is only possible if you use an IP or IPX logical port.

Before you continue, make sure:

- The printer is turned on.
- The printer is directly connected to the computer parallel port with an IEEE 1284-compliant bidirectional cable, or the network printer connection is using an IP or IPX logical port.
Very few automatic switch boxes provide reliable bidirectional communications, so connect the printer directly to your computer.
- The NPA setting on your printer is On or Auto.
- Advanced Status is turned on at the printer.

If you still do not have bidirectional communication after following the list above, reinstall the driver. If

reinstalling the driver doesn't correct the problem, do the following:

- If you have a dedicated IRQ to your port, make sure your computer parallel port is set for bidirectional communication in either compatible or ECP mode.

If all the above fail to fix the problem, contact Technical Support.

- [Related Topics](#)

No download destinations are available

This error occurs when you try to download fonts or overlays to a printer option such as flash memory or hard disk. The message you receive indicates that the driver does not recognize the option as being installed in the printer.

If you have the option installed and you still receive the above message, click the Update Now button. This should update your driver to reflect the installed options, if you are attached to a local port and have bidirectional communication. If the update fails, change the Installable Printer Options setting on the Feature tab manually.

- [Related Topics](#)

About overlays

An overlay is a template that can be defined and then printed as a background on a form before the data from the current job is printed. Typical examples of overlays include company logos or letterheads, decorative borders, or simulated "preprinted" forms. Overlays can include text, graphics, or images.

You can create the overlay and download it directly to the printer, or you can create an overlay file on your system and then download it to the printer. You may want to save a copy of the overlay file on your system if you intend to send a copy to someone or if you want to store the same overlay on multiple printers. It is also a good idea to save the file for backup.

You can use a combination of any two overlays for any one print job.

For example, you can specify the first overlay as the one to be used on the first page and the second overlay as the one to be used on all subsequent pages. This is useful when the first page represents a company letterhead. Or, you can specify the first overlay as the one to be used on all odd-numbered pages and the second overlay as the one to be used on all even-numbered pages. This is useful when duplexing. The first overlay prints on the front of all pages and the second overlay prints on the back of all pages.

Note

- To create and download overlays, you must have the flash memory or disk option installed.

If you want to ...

Create an overlay that can be distributed to others for use in their own printers

Download an already created overlay in your printer

Create an overlay and store it in the printer

Create an overlay that can be distributed to others and then send that overlay to your printer

Use an overlay

■ [Related Topics](#)

Use this procedure

How to create an overlay and store it on your computer

How to download an existing overlay file

How to create an overlay and store it in your printer

How to create an overlay, save it on your computer and send the overlay to your printer

How to use overlays

How to create an overlay

- 1 Design the template using any Windows program. When the design is complete, print a copy of the overlay to confirm scaling and placement of all information.
- 2 Open the Printer Properties dialog box.
- 3 From the Printer Properties dialog box, click the Paper tab.
- 4 From the Output To: list box, click Overlay File.
- 5 Click OK.
- 6 Return to the Windows program you used to create the overlay template and print the template.
- 7 When prompted, enter the path where you want to store the file and a file name with .ps as the extension.

The overlay is now available for downloading to your printer. The file is also available for distribution to users who want to download the overlay to their printer.

■ Related Topics

How to download an existing overlay file

- 1 From the Printer Properties dialog box, click the Overlays tab.
- 2 Click Download Overlay.
- 3 Specify the file name of the overlay file you want to store. If you don't remember the location or name of the program file, click Browse.
- 4 Enter a descriptive name for the overlay.
- 5 Check the Demo check box if you wish to be able to select and print the Overlay from the printer operator panel.
- 6 Click the download destination, either Flash or Disk.
- 7 Click Download.
- 8 When the message box appears indicating a successful download, click OK.
- 9 Click Close to exit the Download PostScript Overlay dialog box.

Note

- The Download Overlay button is dimmed if neither Flash nor Disk is listed as an installed printer option on the Features tab.
- [Related Topics](#)

Descriptive name

A name that makes it easy to recognize the contents of the overlay file. This name appears in the List of Overlays box. You can use any combination of spaces and characters.

- [Related Topics](#)

How to create an overlay and store it in your printer

- 1 Design the template using any Windows program. When the design is complete, print a copy of the overlay to confirm scaling and placement of all information.
- 2 Open the Printer Properties dialog box and click the Paper tab.
- 3 In the Output To: list box, select Overlay -->Printer.
- 4 Click OK.
- 5 Return to the Windows program you used to create the overlay template and print the template.
- 6 When the Download PostScript Overlay dialog box appears:
 - a Specify the file name of the overlay file you want to store in your printer. If you don't remember the location or name of the file, click Browse.
 - b Enter a descriptive name for the overlay.
 - c Check the Demo check box if you want to select and print the Overlay from the printer operator panel.
 - d Click the download destination, either Flash or Disk.
 - e Click Download.
- 7 When the message box appears indicating successful download, click OK.
- 8 Click Close to exit the Download PostScript Overlay dialog box.

■ Related Topics

How to create an overlay file on your system and store it in the printer

- 1 Design the template using any Windows program. When the design is complete, print a copy of the overlay to confirm scaling and placement of all information.
- 2 Print the template to an Overlay file:
 - a From the Properties dialog box, click the Paper tab.
 - b From the Output To: list box, click Overlay --> File.
 - c Return to the Windows program you used to create the overlay template and print the template.
 - d When prompted, enter the path where you want to store the file and a file name with .ps as the extension.
- 3 From the Printer Properties dialog box, click the Overlays tab.
- 4 Click Download Overlay.
- 5 When the Download PostScript Overlay dialog box appears:
 - a Specify the file name of the overlay file you want to store in your printer. If you don't remember the location or name of the file, click Browse.
 - b Enter a descriptive name for the overlay.
 - c Check the Demo check box if you want to select and print the Overlay from the printer operator panel.
 - d Click the download destination, either Flash or Disk.
 - e Click Download.
- 6 When the message box appears indicating successful download, click OK.
- 7 Click Close to exit the Download PostScript Overlay dialog box.

■ Related Topics

How to use an overlay

- 1 From the Printer Properties dialog box, click the Overlays tab.
- 2 Click either First Page/Other Pages or Odd Pages/Even Pages.
- 3 Click the overlay to be used for the First Page.
- 4 Click the overlay to be used for the Other Pages or for the Even Pages.
- 5 Click OK.

Tips

- Create a letterhead logo and store it as an overlay in your printer. Then select that overlay for the first page and None for the other pages to print your job with the logo on the first page only.
- Use Odd Pages/Even Pages with duplex printing to specify one overlay for the front side of each sheet and a different overlay for the back side.

- [Related Topics](#)

About multipage printing

The multipage printing option lets you print images of multiple pages on one form. You can specify the direction the multiple images fit on the page and whether images are separated by a border. When you make a selection, the graphic to the right of the option changes to show how the printed page will look.

- [Related Topics](#)

How to print multiple page images on one form

- 1 From the Properties dialog box, click the Paper tab.
- 2 From the Multipage Printing options, select the number of pages you want on the form.
- 3 From the Page Layout options, select Across or Down.

The graphic changes to reflect your choice.

- 4 Click OK.

■ Related Topics

About fill pattern resolution

A fill pattern is a series of lines or cross hatchings that are used to fill a geometric area. You have a choice of two different densities of fill patterns. In the coarse fill pattern the lines or cross hatchings are spaced farther apart than they are in the fine fill pattern. Shapes filled with coarse fill patterns appear lighter than the same shapes filled with fine fill patterns.

The visual impact of the selection depends on the actual size and shape of the filled areas, and some experimentation may be required to determine the best setting for your job. The selected fill pattern type is in effect for the entire printed job and cannot be set on a per-page or per-area basis. Some programs generate the patterns directly instead of using the fill patterns provided by the operating system. In these cases the fill pattern selection in the driver will not affect the output.

- [Related Topics](#)

How to change the fill pattern resolution

1. From the Printer Properties dialog box, click the Graphics tab.
2. Click either Coarse or Fine.
3. Click OK.

■ [Related Topics](#)

About smoothing

Smoothing improves the appearance of text and graphics in your documents by smoothing the rough edges of characters and lines. While it improves the look of text and graphics, it can sometimes cause images to look blurry.

You can select this option from the printer driver or from the printer operator panel.

- [Related Topics](#)

How to use smoothing

- 1 In the Printer Properties dialog box, choose the Features tab.
- 2 Open the Smoothing list box and click On, Off, or Printer Setting.
- 3 Click OK.

■ [Related Topics](#)

About automatic tray linking

Specifying automatic tray linking treats multiple trays as if they were one tray. Your printer will not warn you it is out of paper until all linked trays are empty.

Various printer models draw paper differently. Some printers completely empty each tray before automatically feeding from the next linked tray. Other printers balance tray usage by feeding from all linked trays simultaneously. Your printer must support tray linking for the trays you want to use and the same size form must be loaded in all linked trays.

Note

- Remove and reload each tray listed as empty to automatically restart your print job. You can also press **Continue** on the printer operator panel to restart your print job.

- [Related Topics](#)

How to enable automatic tray linking

- 1 In the Printer Properties dialog box, choose the Features tab.
- 2 In the Printer Features list box, scroll down until you see the Tray Linking features.
- 3 Select On.
- 4 Click OK.

■ [Related Topics](#)

About options

Installed options are listed on the Features tab of the Printer Properties dialog box.

You can use this feature to do any of the following:

- Automatically update the list when you install an option.
- Manually change a current option setting. You can select an option, such as duplex, even if the option is not installed on your printer. You may want to do this if, for example, you want to print to a file and then send the file to a printer that has the option installed.
- Update the list after you have installed an option or manually changed a current option setting.

Note

- After installing an option, you may want to update the installed options list so the printer driver recognizes the option as available.

- [Related Topics](#)

How to immediately update the list of installed options

1. From the Printer Properties dialog box, click the Features tab.
2. Click Update Now.

The driver communicates with the printer and updates the status of all printer options. If bidirectional communication is not active for the printer, a message informs you that the update was unsuccessful.

■ Related Topics

How to automatically update the list of installed options each time the driver is used

1. From the Printer Properties dialog box, click the Features tab.
2. Click Auto Update.

Each time the driver tabs are opened, the driver communicates with the printer and updates the status of all printer options. If bidirectional communication is not active for the printer, the status will not be updated.

■ Related Topics

How to manually update an option

1. From the Printer Properties dialog box, click the Features tab.
2. Change the setting of the option to the appropriate selection.

■ Related Topics

About fast printing direct to port

Fast Printing Direct to Port uses the "Fastbytes" enhanced parallel interface protocol that allows faster data transfer to the printer. The data is written directly to the printer instead of being written to a spool file and then sent to the printer. To get the maximum benefit, select the Fast Printing Direct to Port check box and set Parallel Protocol to Fastbytes from the printer operator panel.

Selecting this option bypasses the Windows Print Manager. This sends the data to the printer faster, but may increase the time before you can resume work in the program.

Notes

- This option is only available when Windows is in Enhanced (386) mode and the printer is connected via a local parallel port.
- There is a check box on the Printer Connect dialog box which is labeled "Fast Printing Direct to Port". It is not the same as the check box on the Setup dialog box. It is only used by the Windows Print Manager. (Choose Help on the Printer Connect dialog box for more information.) If selected, the check box on the Setup dialog box bypasses Print Manager and overrides the setting of the check box on the Printer Connect dialog box.
- [Related Topics](#)

How to enable fast printing direct to port

- ▶ In the Printer Properties dialog box, select the Fast Printing Direct to Port check box.

- [Related Topics](#)

About Encapsulated PostScript (EPS) files

Encapsulated PostScript (EPS) files can be useful for embedding the output from one program into another program which can import EPS format files.

- [Related Topics](#)

How to create Encapsulated PostScript (EPS) files

- 1 Create and save your file.
- 2 From the Printer Properties dialog box, select the Paper tab.
- 3 From the Output To: list box, select Encapsulated PostScript File.
- 4 In the File Name text box, type the path and name for the EPS file.
- 5 Click OK.
- 6 Print the file.

■ [Related Topics](#)

About compressing data

You can compress your print job before it is sent to your printer. This reduces the size of the job that is sent to the printer, which reduces the time required to send the job. A compressed print job may take slightly longer to process because the printer must decompress the images. Whether this improves overall print time depends on the speed of your computer and the size of images in the job.

You can choose the following compression methods:

- None indicates no compression.
- Medium compression processes faster than high compression, but does not produce the smallest possible job size.
- High compression substantially reduces the job size but is more complex than the medium compression and takes slightly longer to process.

▪ [Related Topics](#)

How to compress data

1. From the Printer Properties dialog box, click the PostScript tab.
2. Click your compression choice.
3. Click OK.

■ [Related Topics](#)

About header information

Each time you print from a Windows program, a header file is created and sent to the printer. The header file contains header information that prepares your printer for printing. A document will not print if the header information is not available.

You can send header information to your printer each time you print a document, or you can reference a header that has been stored in the printer.

Sending the header information each time you print is recommended. You must send header information each time you print a document when you are:

- Printing to a file that will be printed later at a different location.
- Printing to a shared network printer.

Storing header information in your printer can save printing time. You can store the information in flash memory or disk option or in printer memory (RAM).

If you have either flash memory or a disk option installed in the printer, you only have to store the header one time. If you do not have either option, you can store the header in printer memory (RAM).

If you store the header information in printer memory (RAM), that information is lost each time you turn the printer off. You will need to download the header information each time the printer is turned back on.

To automate the download procedure:

- 1 Create a header file.
- 2 Store it on your computer.
- 3 Send the header information to your printer each time you turn it on by entering the appropriate commands in your AUTOEXEC.BAT file.

Note

- Flash memory and the disk option are purchased separately and are not available on all printer models.
- [Related Topics](#)

How to store header information in flash or disk

- 1 Turn your printer on.
- 2 From the Printer Properties dialog box, click the Paper tab.
- 3 In the Output To: list box, select Printer.
- 4 Click the PostScript tab.
- 5 Click Download Header.
- 6 Select the location (Flash or Disk) where you want to store the header.
- 7 Click Send Now.

The printer driver sends the header information to your printer.

- 8 On the PostScript tab, clear the Download with Each Job check box.
- 9 Click OK.

■ Related Topics

How to send header information to printer memory (RAM)

- 1 From the Printer Properties dialog box, click the Paper tab.
- 2 From the Output To: scroll box, click Printer.
- 3 Click the PostScript tab.
- 4 From the Header options, click Download Header.
- 5 From the Download Destination options, click RAM.
- 6 Click Send Now.

The printer driver sends the header information to your printer.

- 7 Click OK.

■ Related Topics

How to send header information each time you print

- 1 From the Printer Properties dialog box, click the PostScript tab.
- 2 From the Header options, click the Download with Each Job check box.
- 3 Click OK.

Note

- Send header information each time you print a document to a file that will be printed later at a different location or when printing to a shared network printer.

- [Related Topics](#)

How to send header information to a computer file

- 1 From the Printer Properties dialog box, click the PostScript tab.
- 2 From the Header options, click Download Header.
- 3 From the Download Destination options, click File.
- 4 In the Name text box, type the path and filename for the header file.

For example, if you want the header file to be located in the WINDOWS directory on your c: drive and its name to be PSPREP.TXT, type c:\windows\psprep.txt.

- 5 Click Send Now.

The driver creates the file you specified and saves the header information in it.

- 6 From Header options, make sure the Download with each Job check box is unchecked.
- 7 Click OK.

Tip

■ You can add the MS-DOS commands to your AUTOEXEC.BAT file so that your computer sends the header file to your printer each time you turn it on. If you do this, turn on your printer before you turn on your computer so that your printer can receive the header information. If you forget to turn on your printer first, follow step 2 above to prepare your printer.

■ [Related Topics](#)

About duplexing

If you are using a printer that supports printing on both sides of the paper (duplex printing), you can specify duplex by indicating the binding edge.

The Duplexer must be purchased separately and is not available on all printer models. If the Duplexer is installed on the printer connected to your computer, a diamond is displayed in the Duplex area on the Paper tab. Also, the Features tab contains a list of installed options.

Long-edge binding in portrait orientation is used for conventional layouts. Long-edge binding in landscape orientation is used for accounting ledgers and spreadsheets. Select Long Edge if you want to print your document in either of these ways.

Short-edge binding in portrait orientation is often used for calendar-like books. Short-edge binding in landscape orientation is another variation of conventional book layouts. Select Short Edge to print your document in either of these ways.

Note

- The orientation setting (Portrait or Landscape) has no effect on the binding edge selection for this option. If Long Edge is selected, the page is turned using the physically longer edge regardless of whether Portrait or Landscape is selected.

- [Related Topics](#)

How to print on both sides of the paper

- 1 From the Printer Properties dialog box, click the Paper tab.
- 2 Click the binding option you want to use. The icon changes to reflect your choice.
- 3 Click OK.

■ [Related Topics](#)

About scaling

When you print your documents, you can reduce or enlarge them by using the Scaling option. You can reduce or enlarge the size of your document without reformatting using your program. Typing a value smaller than 100 reduces the document. Typing a value greater than 100 enlarges the document.

Some Windows programs also include a scaling option. In this case, you might want to experiment to determine which scaling option works best. Using the two options simultaneously may produce unexpected results.

■ Related Topics

How to reduce or enlarge your document

- 1 From the Printer Properties dialog box, click the Paper tab.
- 2 From the Scaling spin box, select a value smaller than 100 to reduce the document or greater than 100 to enlarge the document.
- 3 Click OK.

Note

- Some Windows programs also include a scaling option. In this case, you might want to experiment to determine which scaling option works best. Using the two options simultaneously may produce unexpected results.

- [Related Topics](#)

About printing PostScript error information

The printer can detect certain errors that Print Manager cannot detect. If your document fails to print due to a PostScript error, you can print the error information. This information may help you, a system administrator, or a product support representative determine what caused the error.

- [Related Topics](#)

How to print PostScript error information

- 1 From the Printer Properties dialog box, click the PostScript tab.
- 2 Click the Print PostScript Error Information check box.
- 3 Click OK.

■ [Related Topics](#)

How to print mirror images of your document

- 1 From the Printer Properties dialog box, click the Paper tab.
- 2 From the Orientation options, click the Mirror check box.
The paper orientation graphic changes to reflect your choice.
- 3 Click OK.

About printing negative pages

Select this option if you want to print an entire page with inverted grayscale. All black areas become white, all white areas become black, and all dark-gray areas become light gray. All text, line art, and images are affected by this procedure.

- [Related Topics](#)

How to print negative pages of your document

1. From the Printer Properties dialog box, click the Graphics tab.
2. From the list of Graphics Effects options, click Negative Page.
3. Click OK.

■ [Related Topics](#)

About printing negative images

Select this option if you want to print images in your document with inverted grayscales. Text and line art in the document are not affected by this procedure.

- [Related Topics](#)

How to print negative images in your documents

- 1 From the Printer Properties dialog box, click the Graphics tab.
- 2 From the list of Graphics Effects options, click Negative Images Only.
- 3 Specify any other options you want.
- 4 Click OK.

■ [Related Topics](#)

About halftoning

If you are printing complex graphics, such as photographs or detailed images, you can specify values for halftone frequency and halftone angle. The default values should work in most cases. Unless you are experienced with using halftones, you should not change these values.

- [Related Topics](#)

How to specify halftoning

- 1 From the Printer Properties dialog box, click the Graphics tab.
- 2 From the Halftone options, click the Use Settings Below radio button.
- 3 In the Frequency spin box, specify the number of lines per inch that you want to use for halftone screens.
- 4 In the Angle spin box, specify a value for the angle of the pattern you want to use.
- 5 Click OK.

■ Related Topics

About forms

The term forms refers to all print materials, including paper, labels, transparencies, and envelopes.

Form type

You can choose the size of the forms you want to print on by selecting the appropriate form type. You can either select from a list of form types, or you can define your own form which will then be added to the list of form types.

If you are printing on a nonstandard form size, such as a greeting card, you may want to create a custom form. Once created, the custom form is available as a Form Type option in the Paper tab.

Form source

Because you can use different form types in different trays, you can choose which tray or paper feeder to use for feeding forms to your printer. If your printer supports automatic tray linking, you can even specify multiple trays feed the same form size to your printer.

Auto Select is a special form source. If you choose Auto Select, the printer searches all available sources to try to find the form type requested. Auto Select cannot be used with a user-defined form.

- [Related Topics](#)

How to create a custom form size

- 1 Click Paper tab.
- 2 Click User Forms.
- 3 Choose English or Metric for the measurement units.
- 4 Specify the physical width and length of the form.
- 5 Type a name for the new form in the Form Type text box.
- 6 If the form is an envelope, select the Envelope check box.
- 7 Click Add.
- 8 Click Close.

Note

- There may be some small rounding of form sizes specified using decimal units.
- [Related Topics](#)

How to choose the form type

1. From the Printer Properties dialog box, click the Paper tab.
2. In the Form Type list box, click the appropriate form size.
3. Click OK.

■ [Related Topics](#)

How to choose a form source

- 1 From the Printer Properties dialog box, click the Paper tab.
- 2 In the Form Source list box, click the source you want.
- 3 Click OK.

■ [Related Topics](#)

How to specify printer action when the selected form is not available

If the requested form is not available, the action the printer takes is determined by the form substitution selection.

- 1 In the Printer Properties dialog box, click the Paper tab.
- 2 Click Advanced.
- 3 Select the printer action you want.
- 4 Click OK.

Note

- If the requested form type is a custom form, form substitution is not active and the printer will always respond as if the Enforce Tray Selection option has been chosen.

- [Related Topics](#)

About print orientation

You can specify the orientation that you want to use for printing your documents.

Select Portrait if you want your document to be taller than it is wide; select Landscape if you want your document wider than it is tall.

You can use Mirror with either portrait or landscape. If you select the Mirror check box, the printer rotates the document around its center line. The printed image of the document looks like it would if it were held up to a mirror.

You can use Rotate 180° with either portrait or landscape. This effectively rotates the document "upside down".

- [Related Topics](#)

How to specify print orientation

- 1 From the Printer Properties dialog box, click the Paper tab.
- 2 From the orientation options, click Portrait or Landscape.

Note how the icon changes.

- 3 Click any other print orientation options you want to use.
- 4 Click OK.

■ Related Topics

About virtual memory

Windows uses the Virtual Memory value when printing documents that include TrueType and downloaded fonts to determine how font information is sent to your printer. This value will automatically be updated any time the Current Option Setting for the Printer Memory Option in the Installable Printer Options is changed by either an automatic update or by a manual update. The default virtual memory value is the appropriate value for the amount of printer memory installed in the printer.

The default value is recommended by the printer manufacturer and should work in most cases. If you add more memory to your printer, you can manually increase the virtual memory value. If your document contains several different fonts and is not printing correctly, try lowering this value. Lowering the value clears the printer memory more often, deleting any unnecessary font information.

- [Related Topics](#)

How to specify the amount of virtual memory

1. From the Printer Properties dialog box, click the Features tab.
2. In the Virtual Memory spin box, specify the amount of virtual memory you want to use.
3. Click OK.

Tip

- If your document contains a large number of TrueType or downloaded fonts, you may wish to clear printer memory after printing each page.

- [Related Topics](#)

About print quality

You can improve the print quality of the text in your documents by changing the printing resolution and smoothing options.

Resolution is a measure of the sharpness of a printer image, expressed in the number of dots per inch (dpi). Generally, higher resolution settings produce higher quality graphics; however, documents may take longer to print when using higher resolution.

Image Enhancement Technology (IET) improves the print quality of images, halftones, and fills producing a continuous tone effect but requires additional printer memory and may slow print time. If your printer supports Image Enhancement, it overrides Smoothing (PQET) and PictureGrade settings when printing at 600 dpi.

Turning the smoothing option on enables the default for Print Quality Enhancement Technology (PQET). PQET improves the quality of text by smoothing the edges of characters and lines.

The resolution you select, combined with the values you specify for Halftone Frequency and Halftone Angle, determine the overall print quality of graphics. You may need to experiment with different values for these options to achieve the results you want. Halftone Frequency and Halftone Angle values are stored for each resolution. When you change resolution, the Halftone Frequency and Halftone Angle are set to the last values chosen for that resolution.

- [Related Topics](#)

How to specify printing resolution

1. From the Printer Properties dialog box, click the Graphics tab.
2. From the Resolution list box, specify the resolution you want to use.
3. Click OK.

■ [Related Topics](#)

About Image Enhancement Technology

Image Enhancement Technology (IET) improves the print quality of images, halftones, and fills producing a continuous tone effect but requires additional printer memory and may slow print time. If your printer supports Image Enhancement, it overrides Smoothing (PQET) and PictureGrade settings when printing at 600 dpi.

- [Related Topics](#)

How to specify Image Enhancement Technology

1. In the Printer Properties dialog box, choose the Features tab.
2. Open the Image Enhancement list box and click On, Off, or Printer Setting.

■ [Related Topics](#)

About printing

The printing options in the Printer Properties dialog box offer you many ways to change the look of your documents. For example, you can use the Duplexer to print on both sides of the paper. Or, you can use the multipage printing option to print up to four images on a single form.

Options such as Negative Page and Negative Images Only let you print documents with inverted grayscales, and the Mirror option prints a mirror image of your document.

■ [Related Topics](#)

About copies

Use the Copies option to print more than one copy of your document at a time. The Copies spin box on the Paper tab is independent of a Copies option that may be available in the Print dialog box of your Windows program. Your program settings usually override the settings on the Paper tab.

Specifying the number of copies on the Paper tab usually prints uncollated copies faster. Specifying the number of copies from your Windows program may slow down printing but may enable you to print collated copies if your program supports this feature. Specifying a multiple number of copies on both the Paper tab and in a program Print dialog box may produce unpredictable results.

- [Related Topics](#)

How to print multiple copies

- 1 From the Printer Properties dialog box, click the Paper tab.
- 2 In the Copies spin box, type the number of copies you want.
- 3 Click OK.

■ [Related Topics](#)

About fonts

Use the Fonts tab to select how you print TrueType fonts in your documents. The way you handle TrueType and downloaded fonts can impact your print job. If you have large documents that contain many TrueType or downloaded fonts, you may not have enough memory available to print your documents. Also, documents with many TrueType fonts may print more slowly.

To improve printer performance when printing large documents with many TrueType fonts, try one of the following options:

- Select specific printer fonts to use in place of the TrueType fonts by using the Font Substitution Table.
- Use printer fonts for all TrueType fonts - the printer uses the font that most closely matches the TrueType font.
- Make Type 1 fonts resident in your printer by storing them in the flash or disk option of the printer. Remember, flash and disk are separately purchased options and are not available on all printers.

If you are unable to print a large document with many fonts, you can use the Clear Memory per Page option located on the PostScript tab. Clearing the memory after each page is printed increases the amount of time it takes to send each page to the printer.

The selections you make only affect the fonts that are printed, the original TrueType fonts are still used to display TrueType text on the screen.

- [Related Topics](#)

How to download and store fonts in the printer

- 1 From the Printer Properties dialog box, click the Fonts tab.
- 2 Click Download Font.
- 3 Specify the Download Destination, either Flash, Disk, or RAM.
- 4 Specify the path to the directory which contains the font files. You can either type this in the Font Source Path entry box or use the Browse button beside it.
- 5 Choose the Search Path button. This searches the Font Source Path for appropriate files and lists the fonts found in the Available Fonts list box.
- 6 Select the fonts to be downloaded in the Available Fonts list box.
- 7 Click Download to send the fonts to the printer.
- 8 Click Close.

Note

- The Download Font button is not selectable on the Download Management dialog box if the Printer Toolkit is not installed on your system.

- [Related Topics](#)

How to clear memory after printing each page

- 1 From the Printer Properties dialog box, click the PostScript tab.
- 2 Click the Clear Memory per Page check box.
- 3 Click OK.

■ [Related Topics](#)

How to specify format for sending TrueType fonts to your printer

- 1 From the Printer Properties dialog box, click the Fonts tab.
- 2 From the TrueType Fonts options, clear the Use Printer Fonts for All TrueType Fonts check box.
- 3 Open the Send to Printer As list box and select the method you want to use for sending fonts to your printer.
 - Select Bitmap (Type 3) to print all TrueType fonts as bitmapped fonts.
 - Select Adobe Type 1 to print smaller TrueType fonts as bitmapped fonts and larger TrueType fonts as Adobe Type 1 outline fonts.
 - Select TrueType (Type 42) to print as a Type 42 hinted outline font. This selection will not be available if the printer does not have a TrueType rasterizer.
 - Compared to Bitmap (Type 3), Adobe Type1 and TrueType (Type 42) both require less memory and reduce printing time when printing documents containing TrueType fonts in large point sizes.
 - Compared to Adobe Type 1 outline fonts, TrueType (Type 42) fonts may make the text look smoother and less ragged, especially at large point sizes.
- 4 Click OK.

Note

- This option only specifies the format for downloading a font. To specify individual TrueType fonts to be downloaded, select "Download as Soft Font" in the Font Substitution Table for those fonts. To specify that all TrueType fonts be downloaded, clear both the Use Printer Fonts and Use Substitution Table check boxes.

▪[Related Topics](#)

How to use the closest matching printer fonts

- 1 From the Printer Properties dialog box, click the Fonts tab.
- 2 From the TrueType Fonts options, click the Use Printer Fonts for All TrueType Fonts check box.
- 3 Click OK.

■ Related Topics

How to use the Font Substitution Table

- 1 From the Printer Properties dialog box, click the Fonts tab.
- 2 From the TrueType Fonts options, clear the Use Printer Fonts for All TrueType Fonts check box.
- 3 From the Font Substitution Table, select the TrueType font you want to replace from the For TrueType Font list box.
- 4 From the Use Printer Font list box, select the printer font you want to use in place of the selected TrueType font.

If you would prefer to use a downloaded version of the TrueType font instead of a printer font, select "Download as Soft Font" in the Use Printer Font list box.

- 5 Repeat steps 3 and 4 until you have selected a printer font to use in place of all the TrueType fonts in your document.
- 6 Click OK.

To print TrueType fonts using the printer fonts specified in the Font Substitution Table

- 1 From the Printer Properties dialog box, click the Fonts tab.
- 2 From the TrueType Fonts options, clear the Use Printer Fonts for All TrueType Fonts check box.
- 3 Click the Use Substitution Table check box.
- 4 Click OK.

■ Related Topics

About all colors to black

Color graphics print in grayscales on a monochrome printer. If you are losing detail in light-colored areas, try printing color graphics in black and white only.

- [Related Topics](#)

How to set all colors to black

- 1 From the Printer Properties dialog box, click the Graphics tab.
- 2 Click All Colors to Black.
- 3 Click OK.

■ Related Topics

About the Printer Properties dialog box

In the Printer Properties dialog box, you can view and change a variety of printer settings, including paper size, font type and size, resolution, and color matching. This dialog box also lists installable options, such as memory and disk, and indicates which (if any) are currently installed in your printer.

- [Related Topics](#)

How to open the Printer Properties dialog box

- 1 Click the Windows Start button.
- 2 Click Settings.
- 3 Click Printers to open the Printers dialog box.
- 4 Double-click your printer icon.
- 5 In the dialog box, open the Printer menu and choose Properties.

■ Related Topics

Trademarks

© Copyright 1995,1996 Lexmark International, Inc.

Lexmark, ColorGrade and MarkVision are trademarks of Lexmark International, Inc.

MS-DOS and Windows are registered trademarks of Microsoft Corporation.

TrueType is a registered trademark of Apple Computer, Inc.

Pantone is a registered trademark of Pantone, Inc.

PostScript is a trademark of Adobe Systems Incorporated registered in the United States.

This online Help could include technical inaccuracies or typographical errors. Changes are periodically made to the information herein; these changes will be incorporated in later versions of the Help. Improvements and/or changes in the product(s) and/or the program(s) described in this online Help maybe made at any time.

